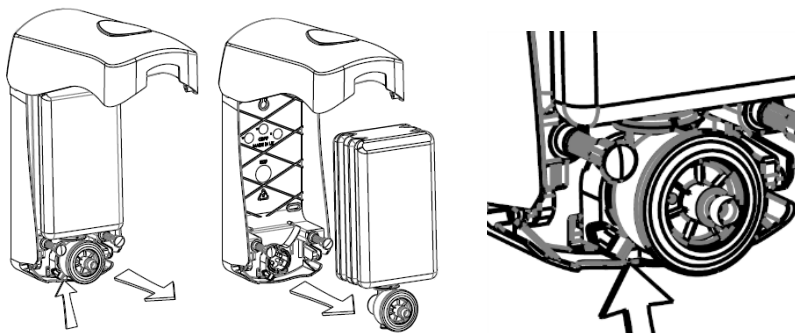
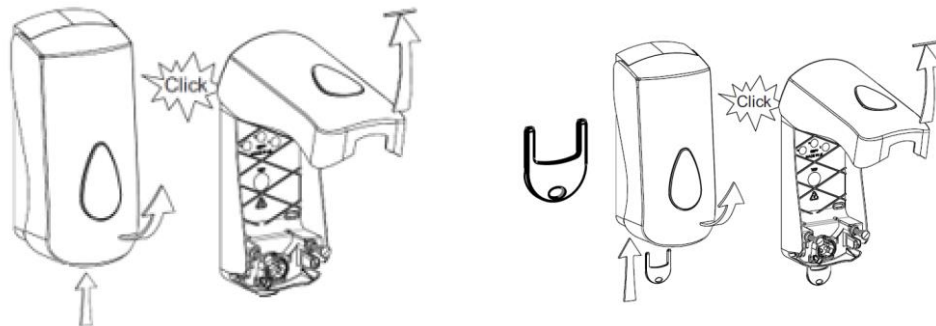




REPLACING A SOAP OR SANITISER POD

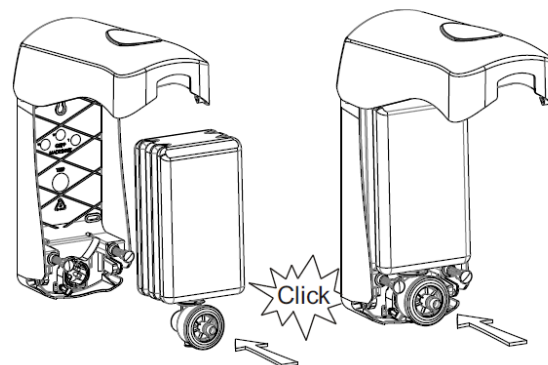
TO OPEN THE COVER:

Your dispensers have key and keyless entry. Keyless dispensers can be opened by firmly pushing the release button located on the underside of the dispenser and gently pulling the dispenser cover up at the same time. The release button is located on the underside of the dispenser, in the middle towards wall-end of the dispenser. Use the horseshoe shaped plastic key to open the dispenser by inserting the prongs into the bottom slots until the cover 'clicks' open.



TO REMOVE AN EMPTY SOAP / SANITISER POD:

Push the green left-hand side tab up to release the pod and pull the empty pod forward to remove at the same time.



TO INSERT A NEW SOAP / SANITISER POD:

Line the pod dispensing nozzle up to the green insert and push in firmly until the pod 'clicks' into place. Close the cover and push a few times to ensure the cover has connected to the pod and product is dispensing with ease.